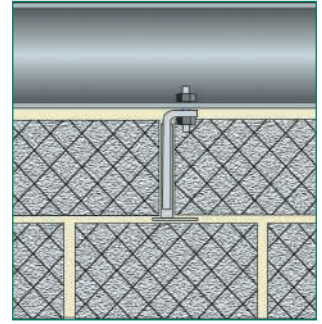


HEAD RESTRAINT PRODUCTS

These types of product are generally used to restrain the tops of free standing walls by tying them securely to an overhead structure, so preventing sideways movement.

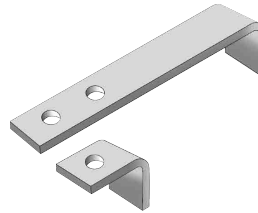


VIR	INTERNAL HEAD RESTRAINT
-----	-------------------------



The VIR head restraint is designed to resist lateral movement in wall heads, restraining them to structural soffits whilst allowing vertical movement (in order, for instance to accommodate beam deflection)

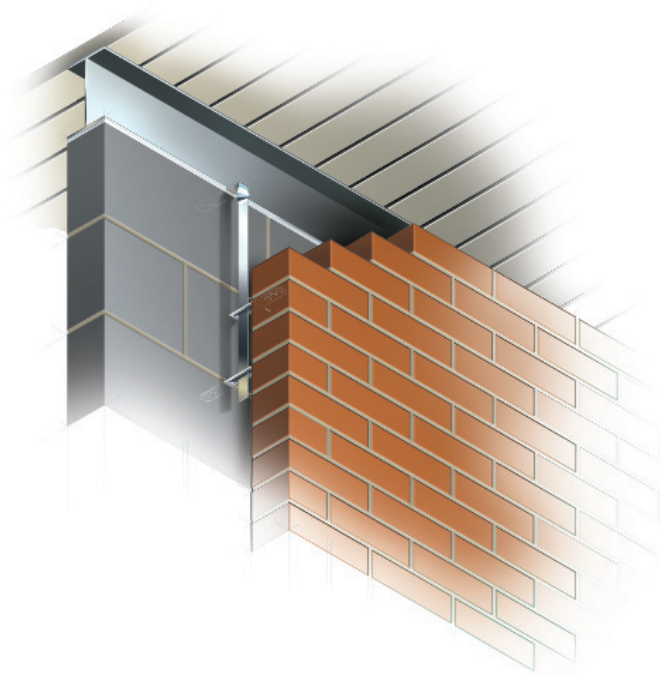
VHR	VERTICAL HEAD RESTRAINT
-----	-------------------------



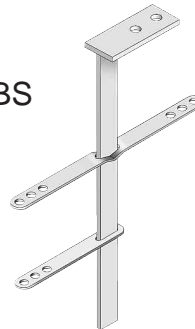
The VHR is a very simple, economical head restraint product, twice holed to accommodate 100mm or 140mm walls. Vertical movement can be accommodated only by allowing clearing between the top of the blockwork panel, and the underside of the restraint angle.

SLIDING ANCHOR STEMS

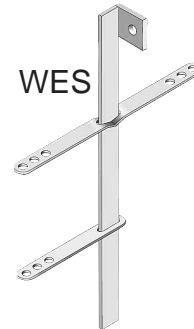
A range of heavy duty (welded) and light duty (bent and/or twisted) stems. Available in standard stem lengths, head sizes and hole configurations with other options available by request. The range of products act to restrain cavity walls to overhead structures, whilst accommodating vertical movements.



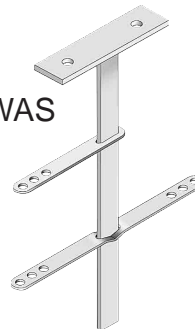
WBS



WES



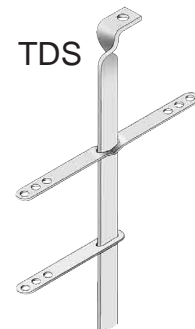
WAS



TF



TDS



BCS

