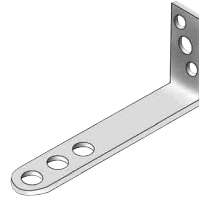


LATERAL RESTRAINT PRODUCTS

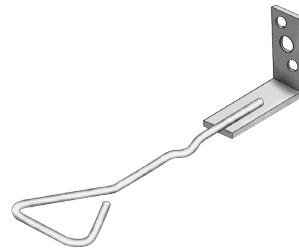
These products allow masonry walls to be restrained back to other elements of structure. This could be to pre-existing walls, or new or pre-existing steelwork. The ties, once in position prevent sideways movement between a wall and another structure.

Type	Projection	Code
VE7	75MM	VE7-75
	100MM	VE7-100
	125MM	VE7-125
	150MM	VE7-150
	175MM	VE7-175
	200MM	VE7-200
	225MM	VE7-225
	250MM	VE7-250
	275MM	VE7-275
300MM	VE7-300	



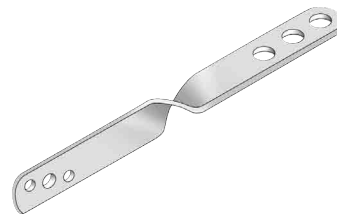
Frame cramp, in stainless or galvanised steel for restraining masonry to new or existing structures and for building in non structural elements, (frames etc.) Holed for screwing, bolting or shot-firing.

Type	Projection	Code
V96	100MM	V96-100
	125MM	V96-125
	150MM	V96-150
	175MM	V96-175
	200MM	V96-200
	225MM	V96-225
	250MM	V96-250
	275MM	V96-275
	300MM	V96-300



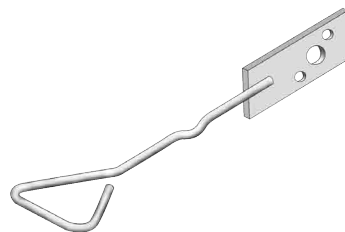
Welded wire clamp, for all applications, as the VE7 with added flexibility provided by a wire projection, minimum projection 100mm.

Type	Projection	Code
V63	150MM	V63-150
	175MM	V63-175
	200MM	V63-200
	225MM	V63-225
	250MM	V63-250



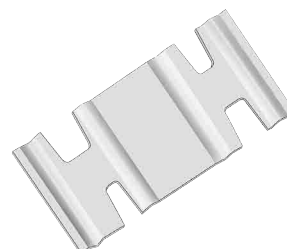
Clasp tie, for restraining masonry back to vertical elements of structure, complete with fixing holes, safety embedment detail.

Type	Projection	Code
V97	150MM	V97-150
	175MM	V97-175
	200MM	V97-200
	225MM	V97-225
	250MM	V97-250
	275MM	V97-275
300MM	V97-300	



Application as for clasp tie but with extra flexibility provided by a wire section. (available in stainless only)

Type	Projection	Code
VCT	140MM	VCT



A simple and cost effective product for restraining masonry back to I section stanchions, providing four different slots to suit differing flange thicknesses.